

ODMAP

**OVERDOSE DETECTION
MAPPING APPLICATION PROGRAM**

Comprehensive Instructional Tool



OVERDOSE RESPONSE STRATEGY | PUBLIC HEALTH | PUBLIC SAFETY | PARTNERSHIP

Navigating This Training

Section 1: ODMAP Overview

Section 2: Registering a New Agency

Section 3: Registering a New User

Section 4: Using ODMAP

- Entering a suspected overdose
- Navigating the National Map

Section 5: Spike Alerts

Section 6: Functional Uses of ODMAP





Section 1:

ODMAP Overview



What is ODMAP?

- The Overdose Detection Mapping Application Program (ODMAP) is a FREE nationwide syndromic surveillance tool that provides near real-time suspected overdose data in an ESRI Mapping format.
- The program is designed to facilitate near-real time data sharing and timely responses to changes in overdose patterns such as a sudden increase, or spike in overdose events.
- It links information entered to a mapping tool, which tracks overdoses to promote real-time response and strategic analysis across jurisdictions.

For more information click here ⇒ <http://odmap.org/#home>



ODMAP Features

- ODMAP National Map
 - Cross jurisdiction suspected event information
 - Filters
 - Heat maps
 - Charts
- Spike, Overdose, and Statewide Alerts
- Adding personal data and Esri web layers
- **Multiple agencies** providing data for areas, capturing more suspected events



ODMAP Website Features

- ODMAP Overview
- ODMAP Implementation Examples
 - examples of how agencies are implementing ODMAP within their communities to better combat the opioid epidemic
- How ODMAP Works
- Spike Alerts
- Training Resources

<http://odmap.org/>





Section :2

Registering a New Agency



To participate with ODMAP, and register as a new agency, complete the electronic form found at:

<http://odmap.org/AgencyAccess/RequestForm>



Registering New Agency Video

Process:

Complete form at <https://www.odmap.org/AgencyRegistrationForm>

- Agency vetting
- Registering will require email with link to the Participation Agreement



Registering a New Agency

Once the form is submitted, the following process will occur:

- The ODMAP team will vet the agency.
- The person designated as "Signatory" will receive an e-mail with a link to the electronic participation agreement. Once the agreement is received, **the "Signatory" will click the hyperlink and execute the document with their initials.**
- Once the electronic participation agreement is signed by the "Signatory," the ODMAP team will approve the document, fully executing the document. Once this occurs, both the designated "Signatory" and "Agency Administrator" will receive an e-mail with their **agency's unique agency code** which is used to register additional users within the agency.
- The "Agency Administrator" can then designate additional Agency Administrators as well as facilitate permissions to different features in ODMAP.



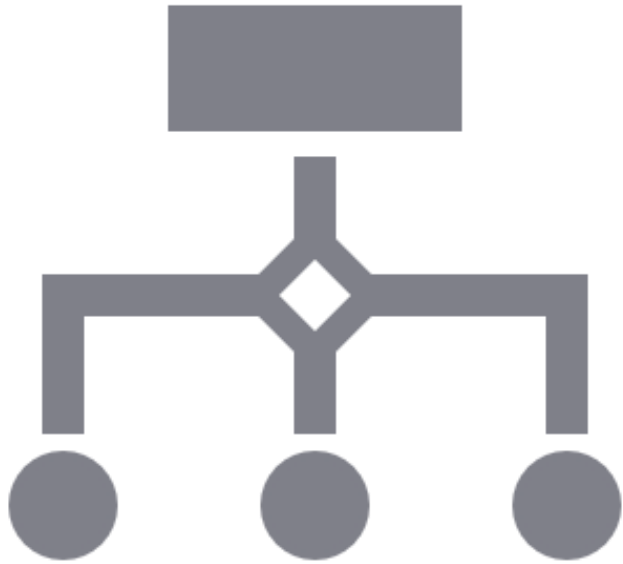


Section :3

Registering a New User

<https://odmap.hidta.org/Account/Register>





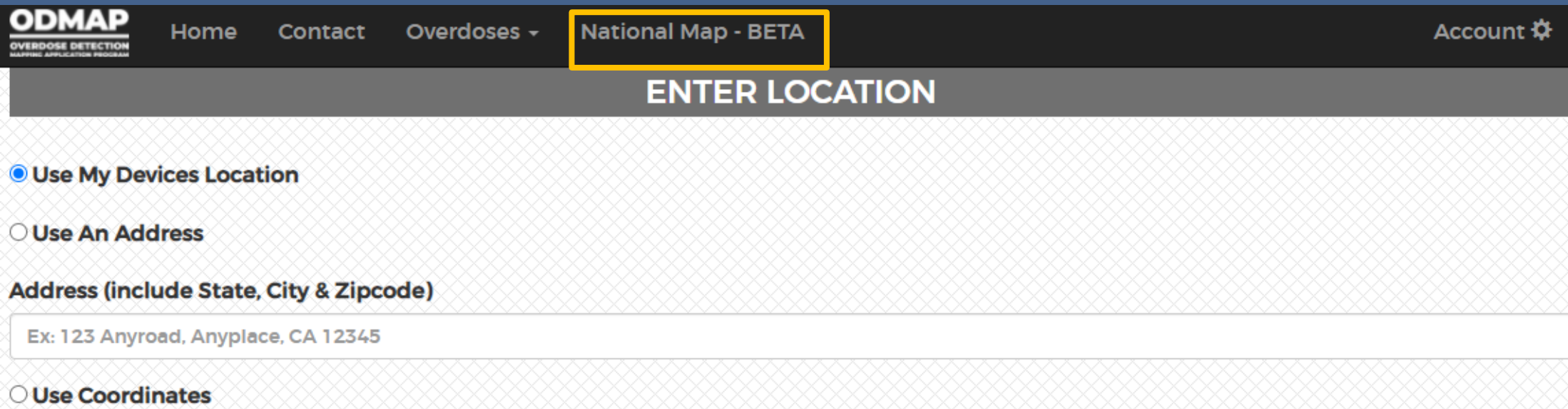
How to Register New Users

- Once your agency has completed all steps, your agency has been **approved**, and your Agency Administrator has received the **agency code** you will be able to add additional users.
- New users from your agency will go to: <https://odmap.hidta.org/Account/Register> and fill out the form using the unique agency code provided to the Signatory and Agency Administrator
- **You cannot register as a new user until your agency has been approved**



ODMAP Home Screen

- Once user accounts have been set up users can log into account from any mobile or desktop computer devices by going to <https://odmap.hidta.org/Account/Login?ReturnUrl=%2F>
- Once logged in you will be taken to the screen to enter an overdose. Users with the correct permissions can enter new overdose data. Those who are granted access will be able to view and interact with the National Map.
- Administrators can also limit access for users under their agency.
- If you need National Map access ensure your Agency Administrator grants access when approving ODMAP new user request.



The screenshot shows the ODMAP National Map - BETA interface. The top navigation bar includes the ODMAP logo (Overdose Detection Mapping Application Program), Home, Contact, Overdoses, National Map - BETA (highlighted with a yellow box), and Account (with a gear icon). Below the navigation bar is a dark grey bar with the text "ENTER LOCATION". The main content area has a light grey grid background and contains three radio button options: "Use My Devices Location" (selected), "Use An Address", and "Use Coordinates". Below the "Use An Address" option is a text input field with the placeholder text "Address (include State, City & Zipcode)" and an example "Ex: 123 Anyroad, Anyplace, CA 12345".





Section :4

Using ODMAP



Entering a Suspected Overdose Training Video





Log In

Use your registered account to log in

Email

The Email field is required.

Password

The Password field is required.

Remember me?

Log In

Register as a New User

Forgot your Password?

Federated Organization?

Link Accounts

Use My Devices Location

Use An Address

3 options for entering location

Address (include State, City & Zipcode)

Ex: 123 Anyroad, Anyplace, CA 12345

Use Coordinates

Latitude

Ex: 35.048230

Longitude

Ex: 176.0985405

CASE INFORMATION

Case Number

Age

Gender

Select

Primary Suspected Drug

Select

Victim Was Taken to the Hospital

Select

Additional Suspected Drug

Alcohol
Benzodiazepine
Cocaine
Crack
Fentanyl

Part of Multiple Overdose Victim Incident

Select

Motor Vehicle Involved

Select

Naloxone Administered By

Select

This section is optional but demographic information and suspected drug type are strongly encouraged to help inform drug trends.

NON-FATAL OVERDOSES

Naloxone
Administration Unknown

Naloxone
Not Administered

Single Dose (2mg IN or 0.4mg IV)
Naloxone Administered

Multiple Doses (>2mg IN or >0.4mg IV)
Naloxone Administered

One-click selection
Do this last

FATAL OVERDOSES

Naloxone
Administration Unknown

Naloxone
Not Administered

Single Dose (2mg IN or 0.4mg IV)
Naloxone Administered

Multiple Doses (>2mg IN or >0.4mg IV)
Naloxone Administered



Does ODMAP Violate HIPAA?

NO!

No Personal Identifiable Information is collected in ODMAP

For additional information see the Legislative Analysis and Public Policy Association (LAPPA) guidance document, which discusses the application of HIPPA and the Health and Human Services (HHS) Privacy Rule to ODMAP

[https://www.cossapresources.org/Content/Documents/Articles/ODMAP
Data Privacy Guidance Document.pdf](https://www.cossapresources.org/Content/Documents/Articles/ODMAP_Data_Privacy_Guidance_Document.pdf)



Setting up an Application Program Interface (API)

An API is a software intermediary that allows programs to interact and share data.

- ODMAP has a custom API that is simple to apply across disciplines. Agencies that elect to use an API for ODMAP data submission typically do so because they have records management systems (RMS) that serve as a centralized data repository for incident reports, calls for service, or electronic patient care reports (ePCRs). The API is a software intermediary that allows the submitting agency's RMS system to interact with ODMAP. Once records are identified within the agency's database, the required data fields for ODMAP are collected, converted into the appropriate format, and transmitted via the ODMAP API import.
- If key responders in your community, such as law enforcement, EMS, the fire department, hospital providers, or the health department routinely document suspected overdoses in a management information system, an API may be an appropriate alternative to manual data entry.

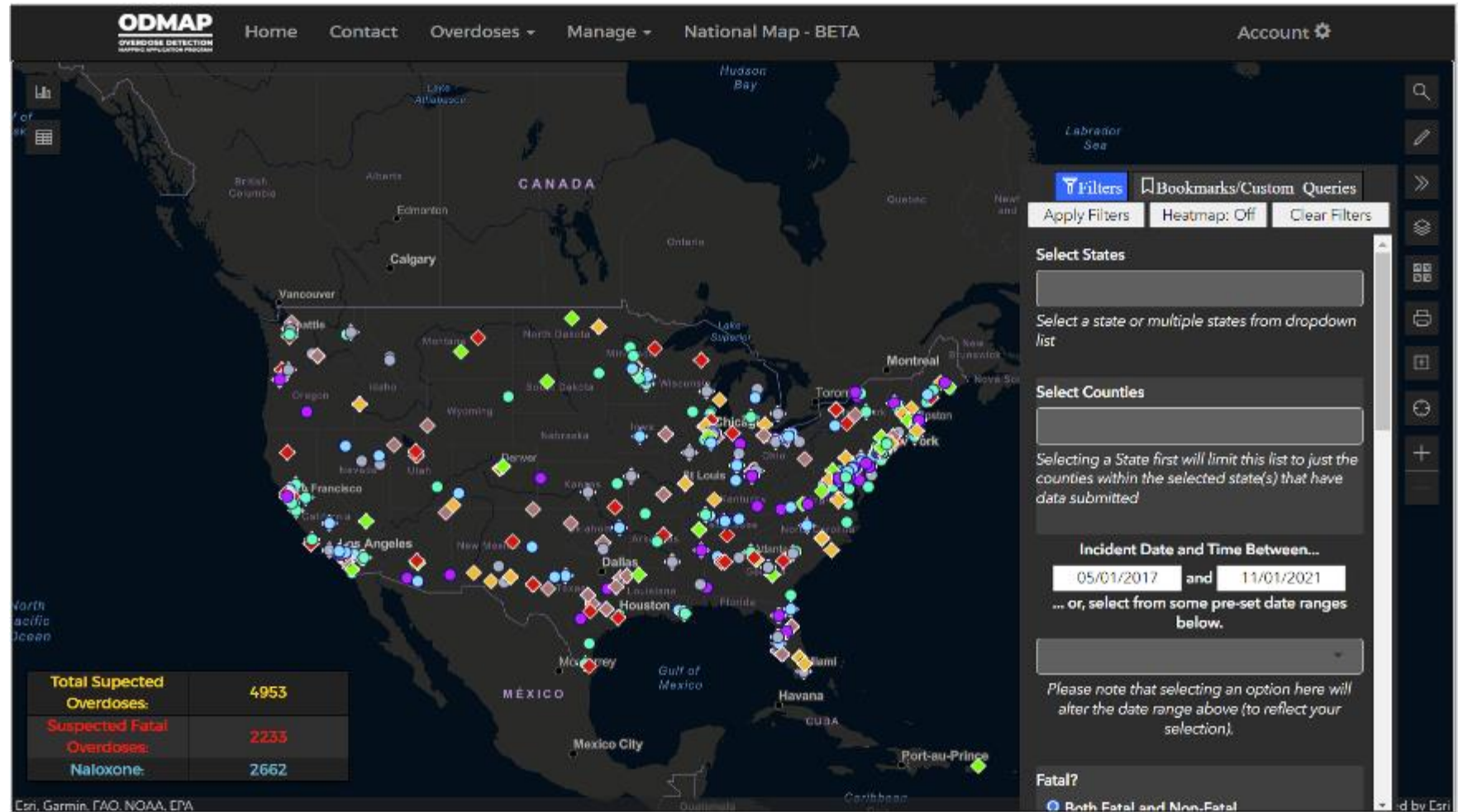
ODMAP API Guidance document :

<http://www.odmap.org/Content/docs/training/general-info/ODMAP-API-Guidance.pdf>



National Map

The ODMAP National Map is designed to facilitate real-time surveillance of suspected overdoses. The dashboard allows administrative users the ability to display and filter locations of suspected overdoses entered into ODMAP. The system can also be used to identify hot spots of suspected overdoses and spikes throughout the nation. The National Map is designed as a tool for decision makers to be able to view and analyze the data nationally.



The data displayed is fictitious and for training purposes only



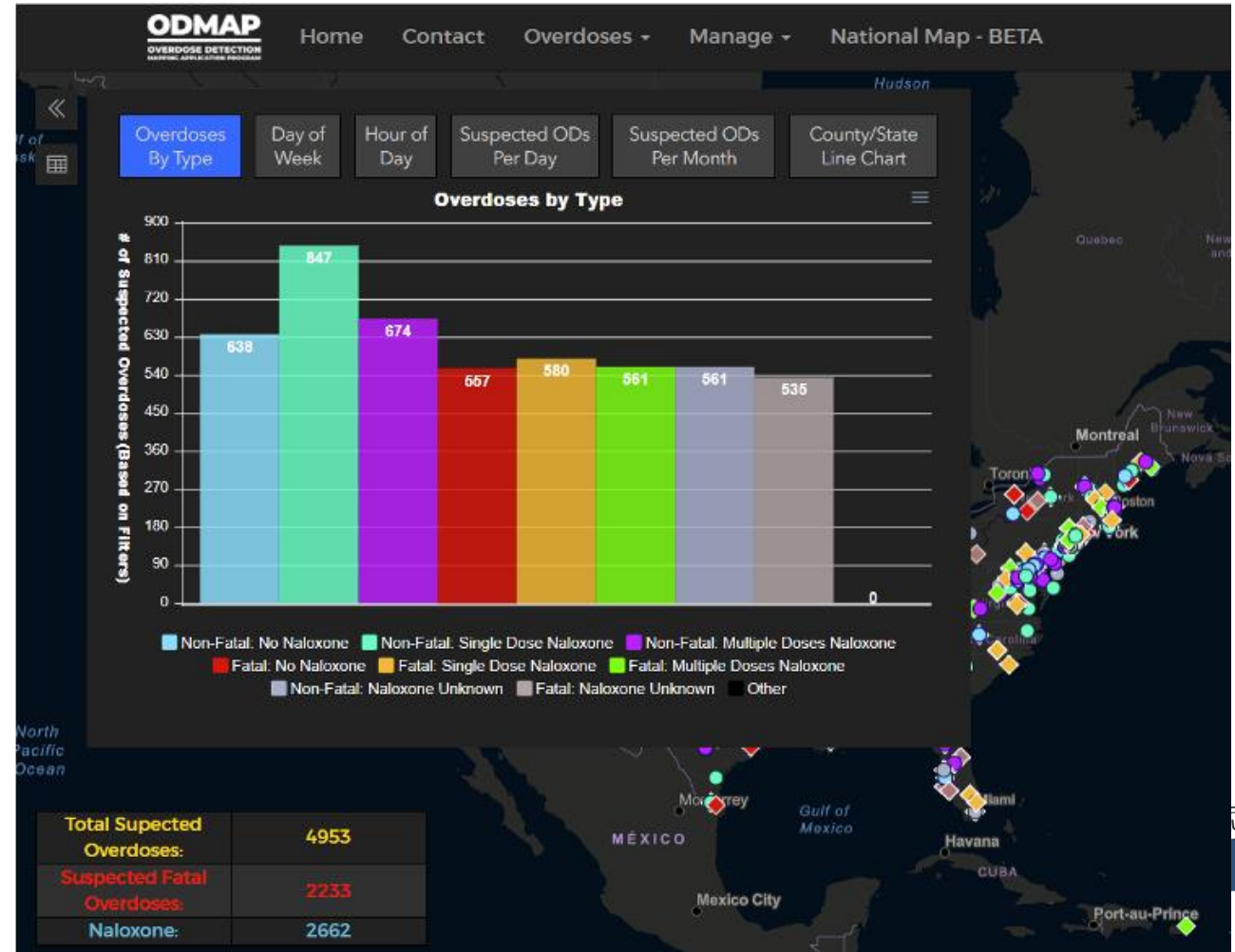
For an interactive overview of the National Map click here
Will replace with new link

National Map Training Video



ODMAP National Map Features

- Analysis and graphs can be pulled directly from the ODMAP National Map once you are a registered agency and user.



The data displayed is fictitious and for training purposes only



Section :5

Spike Alerts



Spike Alert System

- ODMAP is designed to alert users when an overdose spike occurs in real time
- Users can receive a spike alert within their county or surrounding county
- It is intended to give the public safety and public health community real time alerts to mobilize a response strategy
- **Spike alerts can only be set up by Agency Administrators**

Spike Response Framework: <http://odmap.org/Content/docs/ODMap-Overdose-Response-Framework-2018-3.29.18.pdf>




Spike Alert Training Video



SPIKE ALERTS IN ODMAP

Early warning for proactive public safety preparedness



 odmap@wb.hidta.org | Kehoet@chesterfield.gov; laubachr@chesterfield.gov
Henrico, Virginia Spike Alert

Henrico, Virginia is in a spike. There have been 4 total overdose incidents in the last 24 hours.
Currently your spike alert threshold is 3 overdose incidents in 24 hours.
This spike alert was requested by the Chesterfield County Police Department.





Section :6

Functional Uses of ODMAP



Real-time Public Health and Public Safety Data Collaboration



•Public health data/solutions alone **cannot** “solve” the current epidemic



•Public safety data/solutions alone **cannot** “solve” the current epidemic



•Retroactive data alone **cannot** drive life-saving decisions

Collaboration and real-time data helps save lives and drive short and long-term decisions



Spike Alert Response Teams and Protocols

Agencies create a tailored spike response program to ensure there is a quick response to increases or spikes in overdoses

Should include multisector collaboration (public health, public safety, EMS, hospitals, adjacent agencies such as medical examiners/coroners and hospitals)

Can set up spikes for any threshold on ODMAP, so agencies can be alerted based on their agency's prevention/response program

Additional examples of agencies implementing ODMAP in their communities:

<http://odmap.org/#usecase>



Outreach Teams

Agencies can use ODMAP to identify cases in their specified jurisdiction

Once an overdose is identified, they will connect with the reporting agency and implement their follow-up protocol

Specific case information comes from the agency itself, not ODMAP



ODMAP – Post Overdose Outreach

Illinois Response Examples

Cook County Sheriff's Office

- Individuals are targeted for outreach based on ODMAP and 911 dispatch reports
- Outreach efforts are carried out with the goal of informing targeted individuals about services available for people who use illicit substances
- Outreach visits are conducted by clinicians and officers

- ORS Pilot Project Grant
 - Cook County Sheriff's Office received ~150,000 grant to expand their Treatment Response Team
 - Funds will be spent to increase:
 - Officer Wellness
 - Outreach materials
 - Travel for Participants
 - Training
 - Guidance and support provided by a CDC Project Officer



ODMAP – Safe Stations

Illinois Response Examples

- Safe stations leverage firehouses and other public services to engage individuals with opioid use disorder (OUD) in the treatment system
- Target areas of concern with the use of ODMAP
- Conduct Screening at Fire Departments and Police Station
- Officers volunteer to transport individuals to treatment facilities
- Follow-up is conducted by a Peer-Recovery Coach

Grundy County Sheriff's Office Safe Passages Program:

- Identify need for program using overdoses recorded in ODMAP
 - Provide opportunity for individuals struggling with substance use to come into their Sheriff's Department and request help.
 - Individual is transported to partner treatment facility by an officer.
-
- The purpose of this program is to divert them away from the Criminal Justice System and immediately to treatment. Any Grundy County resident who enters the Grundy County Sheriff's Office and requests help with their addiction will be immediately screened into Safe Passage. If the individual who has requested help with their addiction is in possession of drugs or their drug equipment (needles, etc), they will not be arrested or charged.



CHICAGO HIDTA OVERDOSE RESPONSE STRATEGY TEAM

For any questions or additional training for your agency
please contact:

Public Health Analyst

Lindsay Wilson
(256) 225-3618

Lindsay.Wilson@Chicago-hidta.org

Drug Intelligence Officer

Vic Markowski
(312) 414-9442

v.markowski@Chicago-hidta.org

